

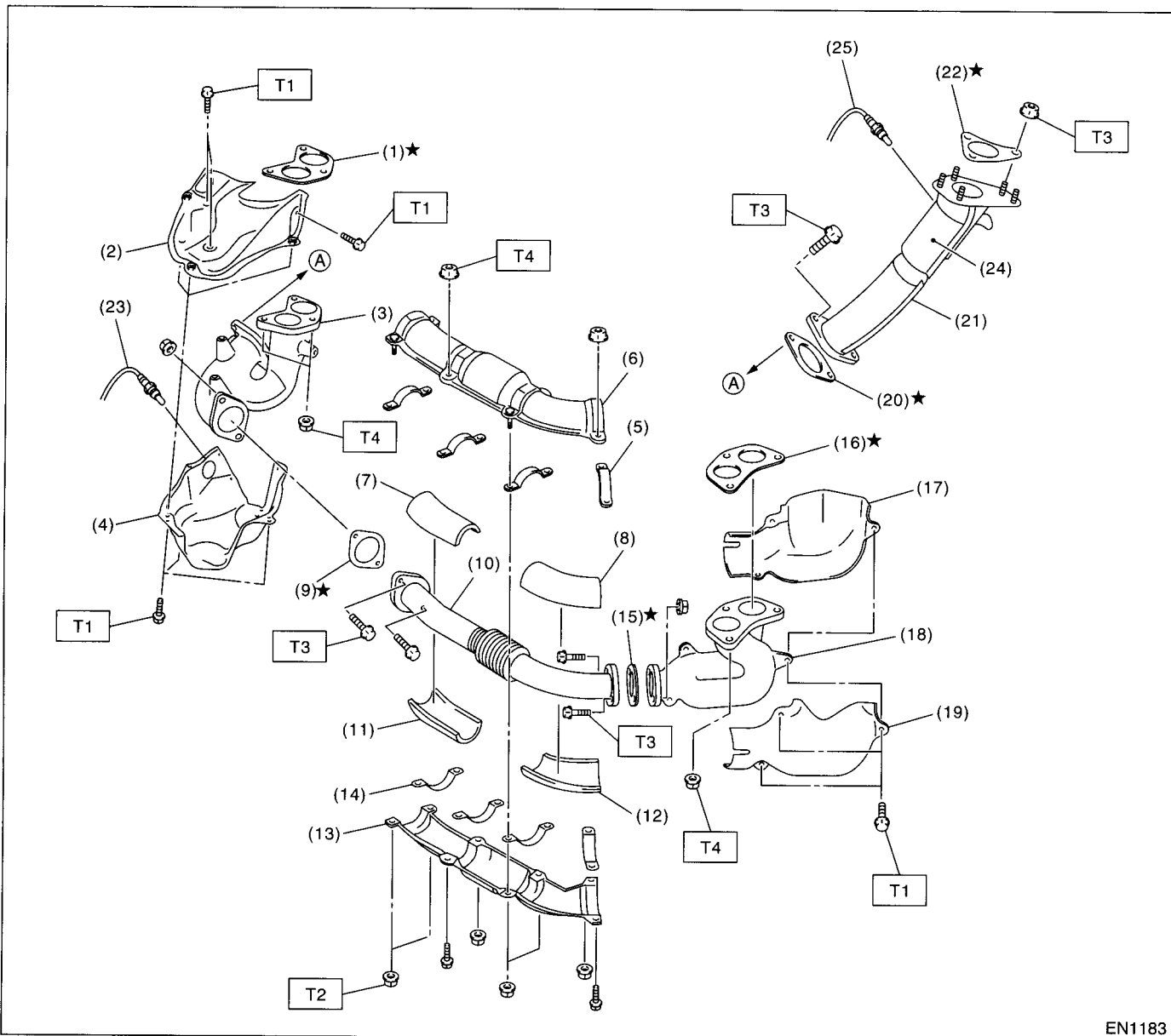
# GENERAL DESCRIPTION

EXHAUST

## 1. General Description

### A: COMPONENT

#### 1. FRONT EXHAUST PIPE



EN1183

EX(DOHC TURBO)-2

# GENERAL DESCRIPTION

EXHAUST

---

|   |  |                                 |
|---|--|---------------------------------|
| (1) Gasket                                  | (11) Front exhaust pipe lower insulator (RH) | (21) Turbocharger joint pipe    |
| (2) Upper exhaust manifold cover (RH)       | (12) Front exhaust pipe lower insulator (LH) | (22) Gasket                     |
| (3) Exhaust manifold (RH)                   | (13) Front exhaust pipe lower cover          | (23) Front oxygen (A/F) sensor  |
| (4) Lower exhaust manifold cover (RH)       | (14) Front exhaust pipe lower clamp          | (24) Precatalytic converter     |
| (5) Front exhaust pipe upper clamp          | (15) Gasket                                  | (25) Exhaust temperature sensor |
| (6) Front exhaust pipe upper cover          | (16) Gasket                                  |                                 |
| (7) Front exhaust pipe upper insulator (RH) | (17) Upper exhaust manifold cover (LH)       |                                 |
| (8) Front exhaust pipe upper insulator (LH) | (18) Exhaust manifold (LH)                   |                                 |
| (9) Gasket                                  | (19) Lower exhaust manifold cover (LH)       |                                 |
| (10) Front exhaust pipe                     | (20) Gasket                                  |                                 |

---

**Tightening torque: N·m (kgf-m, ft-lb)**

**T1: 19 (1.9, 13.7)**

**T2: 25 (2.5, 18.1)**

**T3: 35 (3.6, 26.0)**

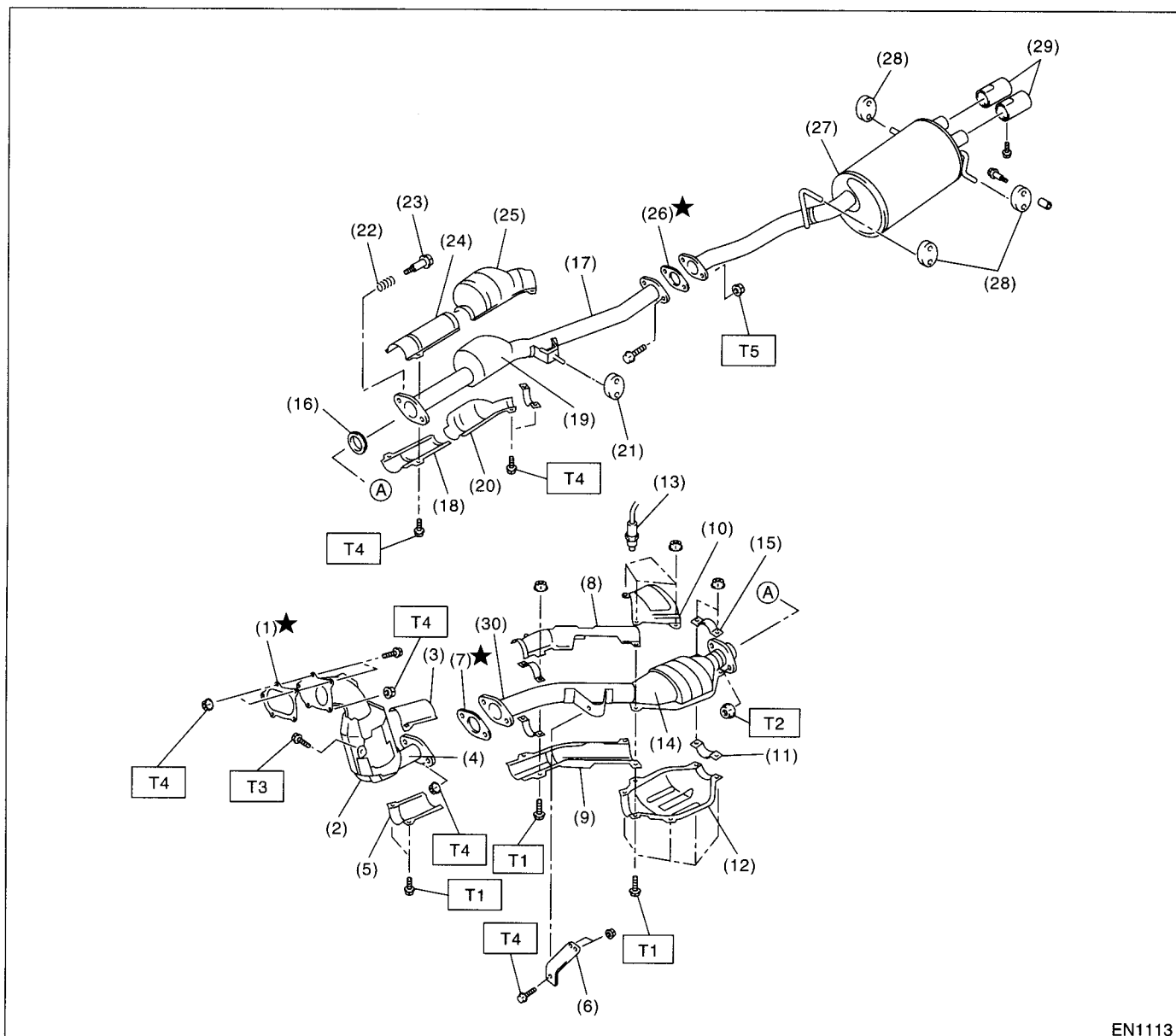
**T4: 40 (4, 28.9)**

---

# GENERAL DESCRIPTION

## EXHAUST

### 2. CENTER AND REAR EXHAUST PIPE, AND MUFFLER



EN1113

- |   |  |   |
|---|--|---|
| (1) Gasket                                | (14) Rear catalytic converter              | (25) Upper rear exhaust pipe cover (Rear) |
| (2) Front catalytic converter             | (15) Upper clamp                           | (26) Gasket                               |
| (3) Upper center pipe cover (Front)       | (16) Gasket                                | (27) Muffler                              |
| (4) Center exhaust pipe (Front)           | (17) Rear exhaust pipe                     | (28) Cushion                              |
| (5) Lower center pipe cover (Front)       | (18) Lower rear exhaust pipe cover (Front) | (29) Muffler cutter                       |
| (6) Bracket                               | (19) Chamber                               | (30) Center exhaust pipe (Rear)           |
| (7) Gasket                                | (20) Lower rear exhaust pipe cover (Rear)  |   |
| (8) Upper center pipe cover (Rear)        | (21) Cushion                               |   |
| (9) Lower center pipe cover (Rear)        | (22) Spring                                |   |
| (10) Upper rear catalytic converter cover | (23) Bolt                                  |   |
| (11) Lower clamp                          | (24) Upper rear exhaust pipe cover (Front) |   |
| (12) Lower rear catalytic converter cover |  |   |
| (13) Rear oxygen sensor                   |  |   |

#### Tightening torque: N·m (kgf·m, ft·lb)

**T1: 13 (1.3, 9.6)**

**T2: 18 (1.8, 13.0)**

**T3: 30 (3.1, 22.4)**

**T4: 35 (3.6, 26.0)**

**T5: 48 (4.9, 35.4)**

**EX(DOHC TURBO)-4**